

82006-0141-07-A

SIL 3400-07 Instructions for ST3400 Software Update to A3.09

Date: 3/9/2006

Regarding: A3.09 Software Release

Introduction

This document describes the procedure to update an ST3400 to software version A3.09

Reference

SIL 3400-07 Service Information Letter

Hardware Requirements

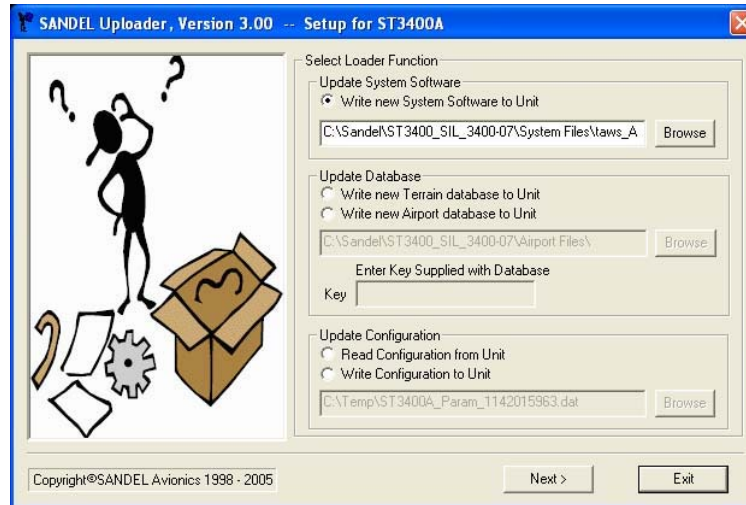
PC with Windows XP or 2000 with available USB port

USB to mini-USB interface cable, Sandel part number 88114 or equivalent

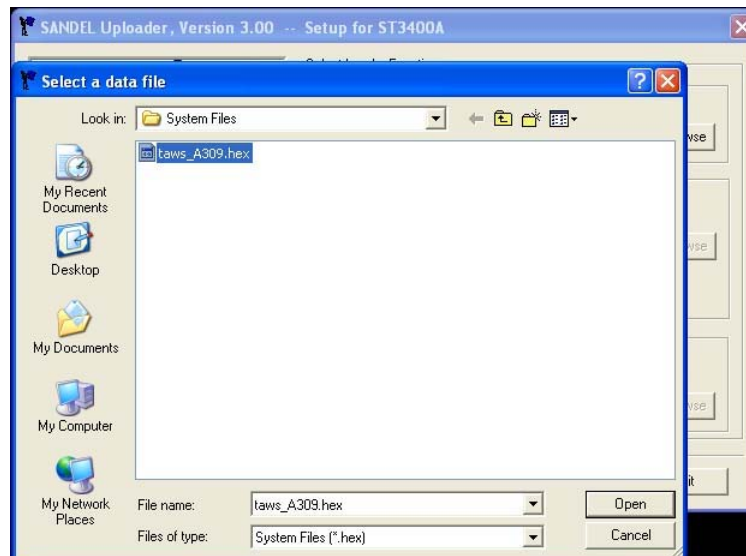
Upload Instructions

1. With power removed from the ST3400, connect the ST3400 to the PC via the USB cable.
2. Power up the ST3400 in maintenance mode. This is done by holding down the BRG1 and BRG2 keys on the ST3400 while applying power. Continue to hold down the two keys until the display is visible.
3. If a message 'Found New Hardware' appears, follow the instructions for loading the USB driver in document **24001-01 Sandel USB Uploader Instructions**.
4. Open Windows Explorer and locate the **Sandel_Uploader_3.00.exe** file. The default location will be in 'C:\Sandel\ST3400_SIL_3400-07'. Double click on the Sandel_Uploader_3.00.exe file to start.

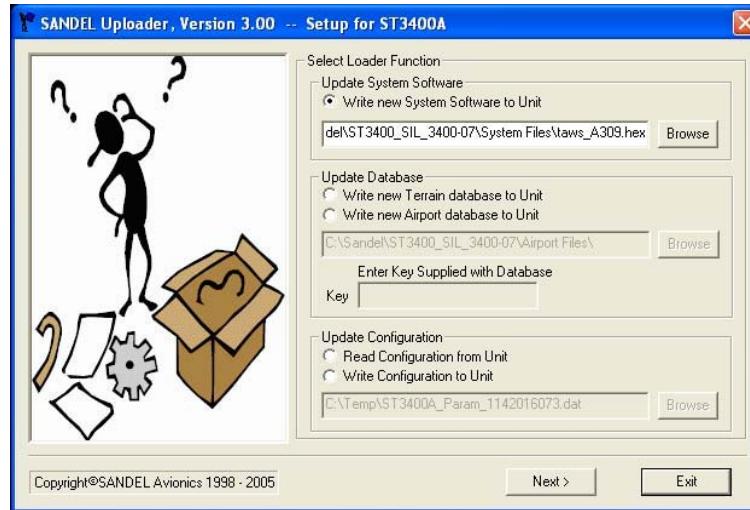
5. The Sandel Uploader Setup screen will appear. (Example below.) Select the option for **'Write new System Software to Unit'**.



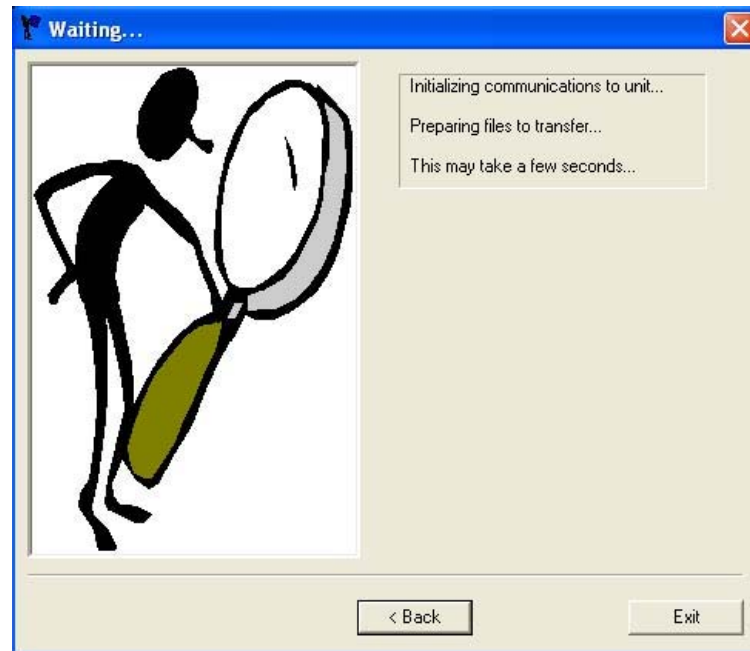
6. Click on 'Browse' and locate the file 'taws_A309.hex'. Highlight the file and click on 'Open'. The default location for this file is 'C:\Sandel\ST3400_SIL_3400-07\System Files'.



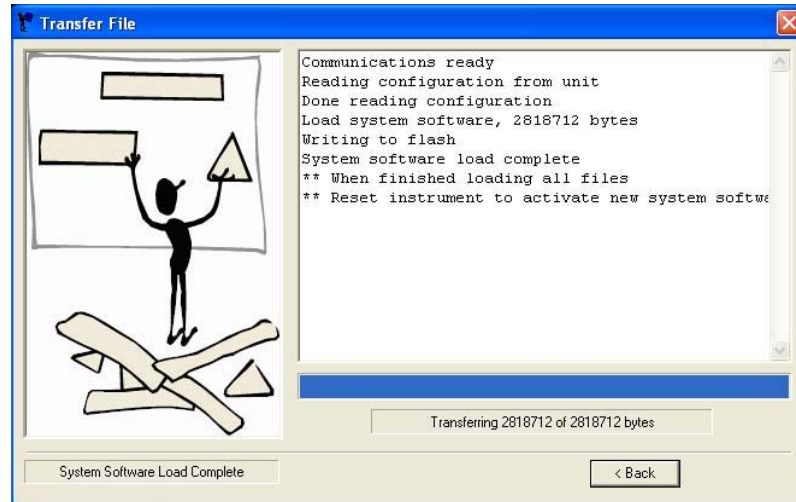
7. Verify that the file 'taws_A309.hex' is shown in the selection window and then click on 'Next'.



8. A message that the program is initializing communications with the unit will appear for several seconds.



9. Once communication is established, the software file will be transferred to the ST3400. Do not remove power or disconnect the cable until 'Software System Load Complete' is shown.



10. Close the program by clicking on the red 'X' at the top right of the program window. The USB cable can now be removed and the ST3400 powered down.
11. Power up the ST3400 in maintenance mode. On Page 2, verify that the Software Rev is A3.09. On Page 16, SFTWR CRC, press the RMI button on the ST3400 to update the CRC codes. Verify that all fields show Pass.
12. Verify that the configuration settings on Pages 2 through 14 are unchanged from the previous settings. Power down the unit when done.

Troubleshooting

Please contact Sandel Product Support if there are any questions with this procedure:

Phone: 877-726-3357 or 760-727-4900 ext. 2

Email: support@sandel.com