

Instructions for SN3500 and SN4500 Database Updates

Date: 5/1/2008

Regarding: Database update for the SN3500 and SN4500

Introduction

This document describes the procedure to update the database in an SN3500 or SN4500

Hardware Requirements

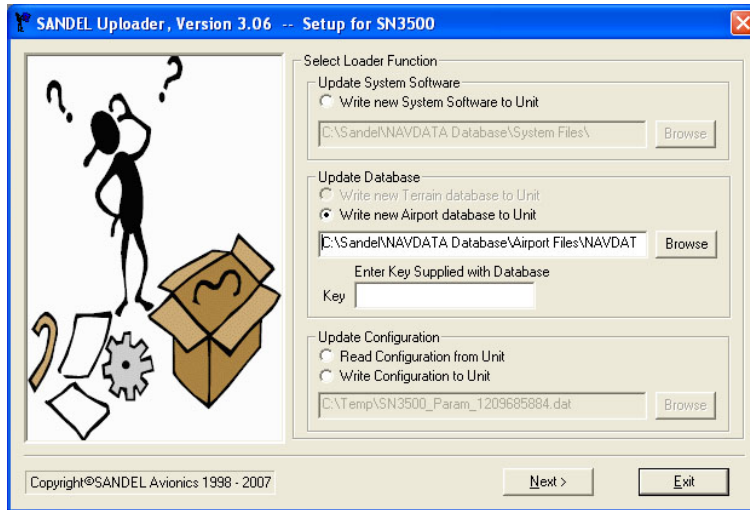
PC with Windows XP or 2000 with available USB port

USB to mini-USB interface cable, Sandel part number 88114 or equivalent

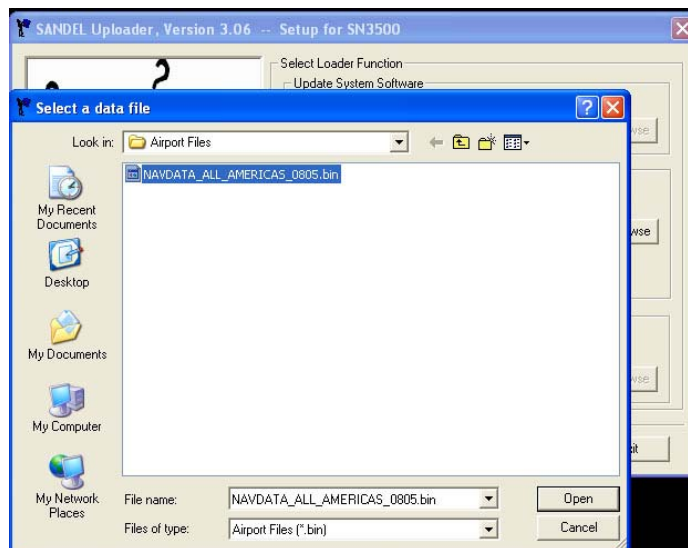
Upload Instructions

1. Before proceeding, the new database file must be downloaded and a database key code must be purchased online at www.sandel.com. It is important that the correct serial number of the SN3500/SN4500 is used for the transaction as the database key code is serial number specific. After downloading the database file, double-click on the file to extract the contents.
2. With power removed from the SN3500/SN4500, connect the unit to the PC via the USB cable.
3. Power up the SN3500/SN4500 in maintenance mode. This is done by holding down the BRG and MEM keys on the SN3500 or the AUX and MEM keys on the SN4500 while applying power. Continue to hold down the two keys until the display is visible.
4. If a message 'Found New Hardware' appears, follow the instructions for loading the USB driver in Appendix A of these instructions.
5. Open Windows Explorer and locate the **Sandel_Uploader_3.06.exe** file. The default location will be in 'C:\Sandel\NAVDATA Database'. Double click on the Sandel_Uploader_3.06.exe file to start.

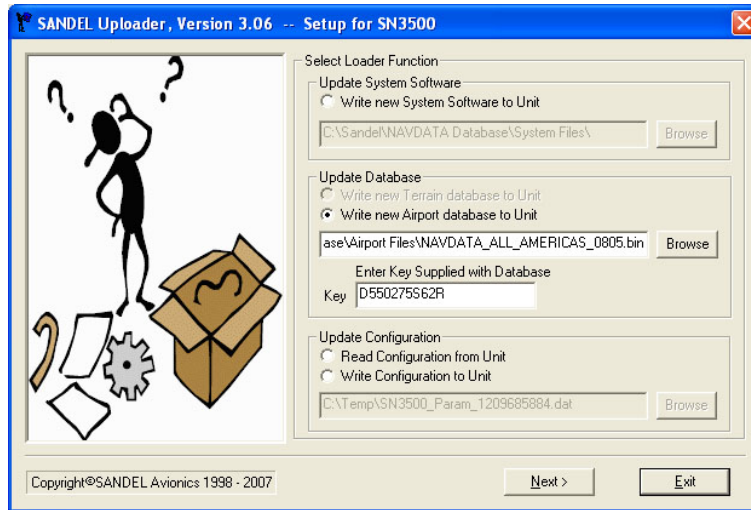
- The Sandel Uploader Setup screen will appear. (Example below.) Select the option for **'Write new Airport Database to Unit'**.



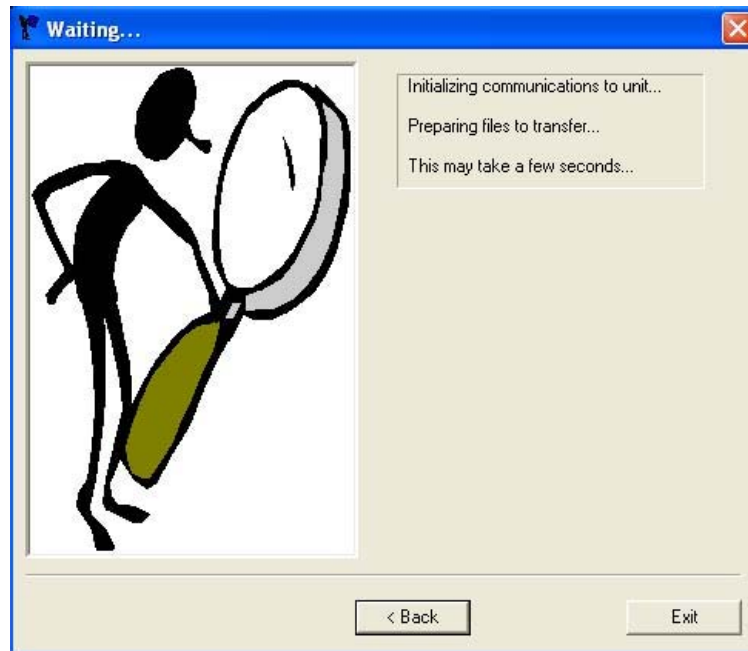
- Click on 'Browse' and locate the appropriate database file. Highlight the file and click on 'Open'. The default location for this file is 'C:\Sandel\NAVDATA Database\Airport Files'.



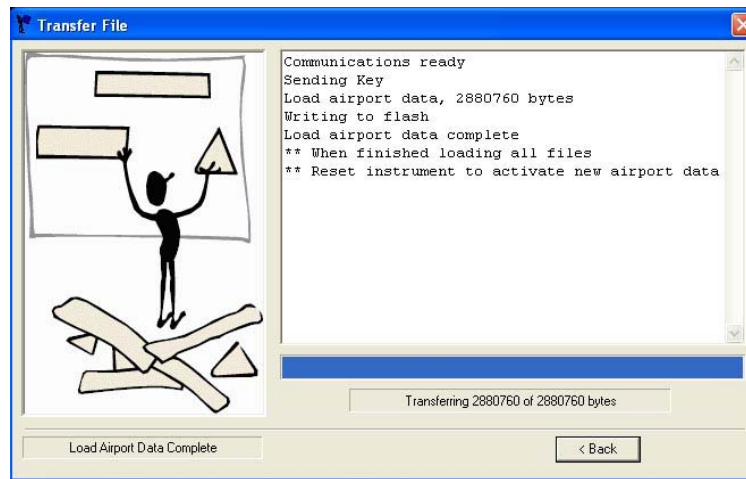
- Verify that the selected file is shown in the selection window. Enter the database key code in the window next to 'Key'. Click on 'Next'.



- A message that the program is initializing communications with the unit will appear for several seconds.



10. Once communication is established, the database file will be transferred to the SN3500/SN4500. Do not remove power or disconnect the cable until 'Load airport data Complete' is shown.



11. Close the program by clicking on the red 'X' at the top right of the program window. The USB cable can now be removed and the SN3500 powered down.
12. Power up the SN3500/SN4500 in maintenance mode. On Page 2, verify that the Map Rev reflects the new expiration date of the database. On the SFTWR CRC page (Page 16 on the SN3500 or Page 17 on the SN4500), press the CLR button on the SN3500/SN4500 to update the CRC codes. Verify that all fields show Pass.

Troubleshooting

Please contact Sandel Product Support if there are any questions with this procedure:

Phone: 877-726-3357 or 760-727-4900 ext. 2
Email: support@sandel.com

Appendix A Sandel USB Driver Installation Instructions

Introduction

This document includes instructions for installing the USB driver for Sandel products which utilize a USB interface. This enables the updating of software and databases through the USB port located on the front bezel of the units.

Note: This procedure does not apply to the SN3308 EHSI as that product requires a serial interface.

Hardware Requirements

- PC with Microsoft Windows Vista (32 bit version only), XP or 2000 with available USB port
- USB to mini-USB interface cable, Sandel part number 88114 or equivalent

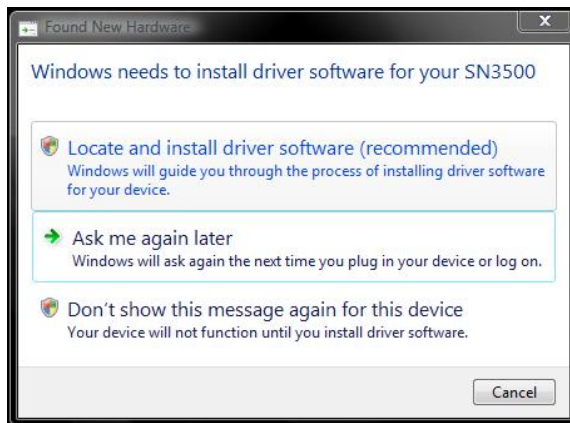
USB Driver Installation Instructions

It is necessary to install a USB driver the first time a Sandel unit is connected to a PC via the USB interface. The procedures are slightly different for each version of Windows and are described separately on the following pages.

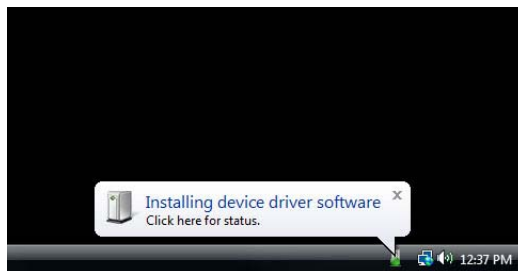
Windows Vista USB Driver Installation

(Note: Only the 32 bit version of Windows Vista is compatible with the Sandel USB driver. The 64 bit version of Windows Vista is not supported.)

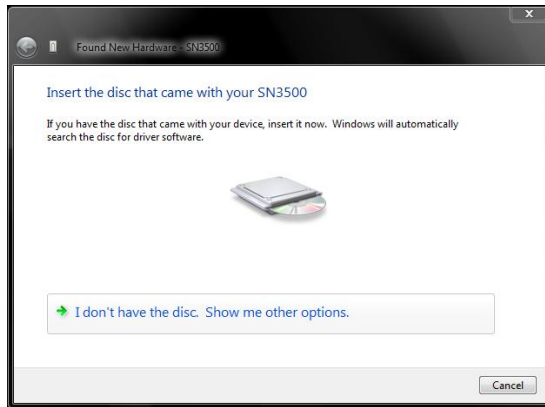
1. With power removed from the Sandel unit, connect the unit to the PC via the USB cable.
2. Power up the Sandel unit in maintenance mode. This is done by holding down the appropriate keys on the unit while applying power. Continue to hold down the keys until the display is visible.
3. A message 'Windows needs to install driver software' will appear. (Example using the SN3500 is shown below.) Click on 'Locate and install driver software'.



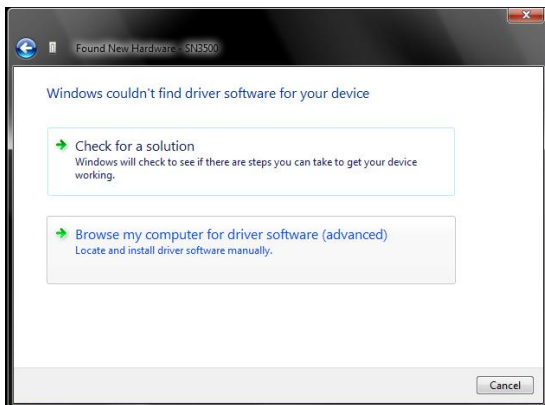
4. A message 'Windows needs your permission to continue' will appear. Click on 'Continue'.
5. A message 'Installing device driver software' will appear at the lower right. No action is necessary.



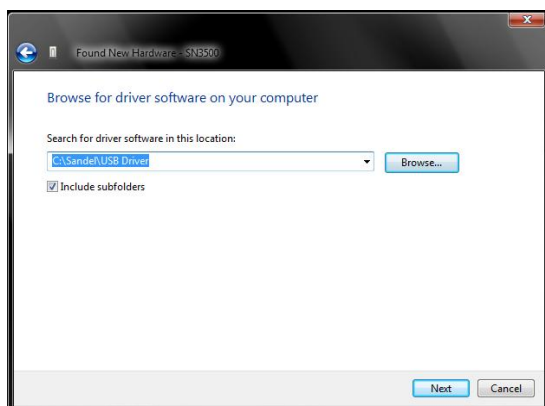
6. After several seconds, Windows will prompt to 'Insert the disc'. If the software or database was distributed on a CD-ROM, insert the CD and go to Step 9. Otherwise click on 'I don't have the disc. Show me other options.'



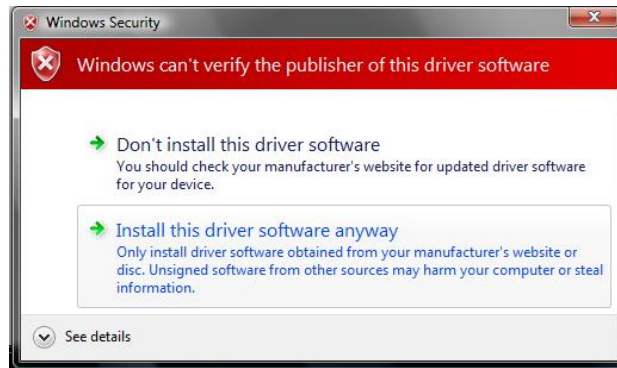
7. A message 'Windows couldn't find driver software for your device' will appear. Click on 'Browse my computer for driver software'.



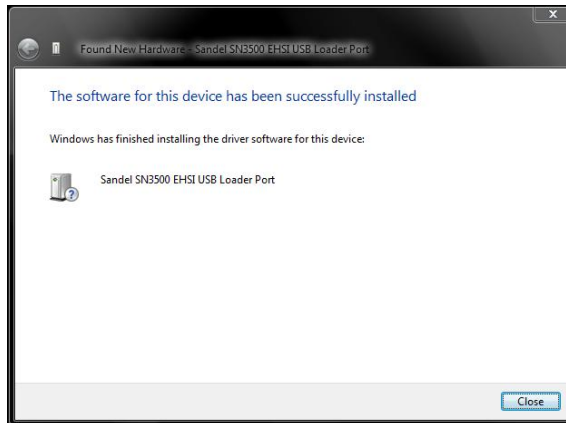
8. Windows will ask for the location of the driver. Click on 'Browse' to select the folder which contains the file 'ST3400.inf'. The default location is C:\Sandel\USB Driver'. Click on 'Next'. (Note: ST3400.inf is used for all Sandel models.)



9. A warning message 'Windows can't verify the publisher of this driver software' will appear. Click on 'Install this driver software anyway'.



10. Windows will install the driver. This will take several seconds. After successful installation of the driver click on 'Close' to complete the process.



Windows XP USB Driver Installation

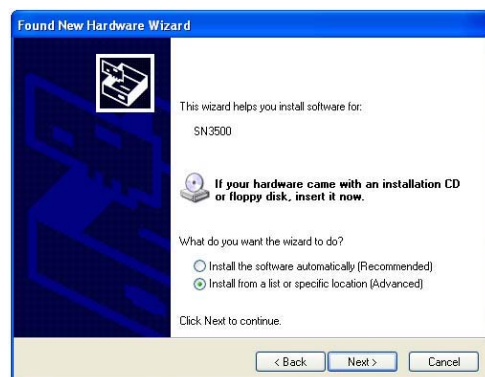
1. With power removed from the Sandel unit, connect the unit to the PC via the USB cable.
2. Power up the Sandel unit in maintenance mode. This is done by holding down the appropriate keys on the unit while applying power. Continue to hold down the keys until the display is visible.
3. A message 'Found New Hardware' will appear. (Example below.)



4. The Found New Hardware Wizard will start. Select the option 'No, not this time' and click on 'Next'.



5. Windows will ask if it should install the software automatically or install from a list or specific location. Select the option 'Install from a list or specific location (Advanced)' and click on 'Next'.



- Windows will ask for the location of the driver. Select the option ' Search for the best driver in these locations' and check the box 'Include this location in search:'. Click on 'Browse' and select the folder that contains the file 'ST3400.inf'. The default location is 'C:\Sandel\USB Driver'. If installing from a CD-ROM, the file will be located in the 'Sandel\USB Driver' folder. Click on 'Next'. (Note: ST3400.inf is used for all Sandel models.)



- Windows will locate and install the necessary driver.



- The driver has been installed. Click on 'Finish' when complete.



Windows 2000 USB Driver Installation

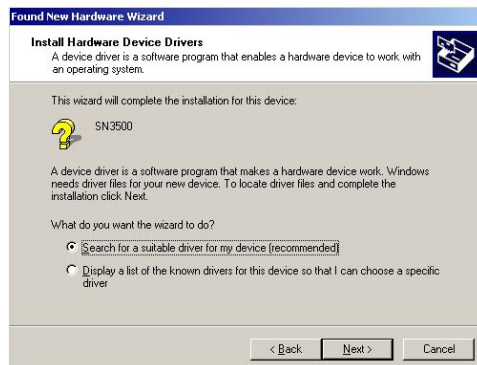
1. With power removed from the Sandel unit, connect the unit to the PC via the USB cable.
2. Power up the Sandel unit in maintenance mode. This is done by holding down the appropriate keys on the unit while applying power. Continue to hold down the keys until the display is visible.
3. A message 'Found New Hardware' will appear. (Example below.)



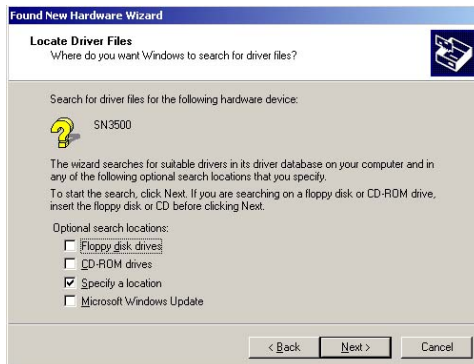
4. The Found New Hardware Wizard will start. Click on 'Next'.



5. Windows will ask if it should search for the driver. Select the option 'Search for a suitable driver for my device (recommended)' and click on 'Next'.



6. Windows will ask where to search for the driver. Select the option 'Specify a location' and click on 'Next'.



7. Windows will ask for the location of the driver. Click on 'Browse' to select the folder which contains the file 'ST3400.inf'. The default location is 'C:\Sandel\USB Driver'. If installing from a CD-ROM, the file will be located in the 'Sandel\USB Driver' folder. Click on 'OK'. (Note: ST3400.inf is used for all Sandel models.)



8. Windows will verify that a device driver has been found. Click on 'Next'.



9. Windows will install the driver. Click on 'Finish' when complete.



END OF USB DRIVER INSTALLATION INSTRUCTIONS